

# A13/A130 Sadlers Farm project newsletter

[www.balfourbeatty.com/sadlersfarm](http://www.balfourbeatty.com/sadlersfarm)

23 November 2022

**Balfour Beatty is undertaking a programme of remedial works on the A13/A130 Sadlers Farm scheme on behalf of Essex County Council.**

From this weekend, and into early next week, there will be a number of night-time closures of the A13 and A130 to allow our teams to carry out testing on the Sadlers Farm Bridge and to remove current traffic management on the A13/A130.

Details of all planned closures can be found on the right-hand column of this newsletter.

The survey work we are carrying out this weekend will allow our teams to plan the future programme of remedial works required on Sadlers Farm and Sadlers Hall bridges.

Depending on the results of the survey, future works could include intrusive structural repairs to both bridges, the replacement of bearings, fencing/barrier improvements and surfacing works on the main A13/A130.

This work may involve further closures of the Eastbound and Westbound A13/A130 between Pitsea Interchange and the Rayleigh Spur Roundabout. Once the programme of works has been agreed with Essex County Council, we will share details of works, the expected end date and road closures with you in advance.

We expect work to begin in January 2023.

We apologise for the inconvenience caused by the ongoing works and remain steadfast in our commitment to completing this programme of remedial works as soon as possible. We understand the inconvenience that these essential works have caused and thank the public and the local community for their ongoing patience.

**Subject to ECC Network Assurance approvals, these dates may change.** All other information about the project can be found on our dedicated web page:

[www.balfourbeatty.com/sadlersfarm](http://www.balfourbeatty.com/sadlersfarm)

## Traffic Management Phases

### Thursday 24<sup>th</sup> November, Friday 25<sup>th</sup> November & Saturday 26<sup>th</sup> November

- **Night-time only (9.30pm – 5.30am)** A13 & A130 Southend bound full closure Pitsea to Rayleigh Spur - Sadlers Farm Bridge jacking/lifting to test bridge weight and stiffness

### Sunday 27<sup>th</sup> November

- Scaffolding partially removed and made safe for return to work on bridge in early 2023

### Sunday 27<sup>th</sup> November

- **Night-time only (9.30pm – 5.30am)** A13 & A130 Southend bound full closure Pitsea to Rayleigh Spur for removal of plant and welfare from Sadlers Farm Bridge and Sadlers Hall Bridge

### Monday 28<sup>th</sup> November

- Permanent vehicle restraint system (VRS) re-installed and tested

### Monday 28<sup>th</sup> November

- **Night-time only (9.30pm – 5.30am)** A13 & A130 Southend-bound and London-bound full closure Pitsea to Rayleigh Spur for removal of all traffic management, temporary barriers and speed restriction.

### Tuesday 29<sup>th</sup> November

- A13 & A130 Southend-bound and London-bound - all lanes fully opened and 70mph speed limit reinstated

### Tuesday 29<sup>th</sup> November - ongoing

- Data from bridge weight and stiffness testing is analysed by bridge designer and bearing specialist to determine and agree 2023 remedial actions with Essex County Council.

# Frequently Asked Questions

## Q: When is the project due to complete?

A: The exact end date will be dependant on the findings of this weekend's survey work.

## Q: Will there be any road closures?

A: We will implement a multi-phase traffic management plan, comprising of a series of bridge closures, lane closures, overnight and weekend works to carry out the remedial works which will inevitably and unfortunately cause some disruption to road users and local communities. Visit our project news page for more information.

## Q: What are your working hours?

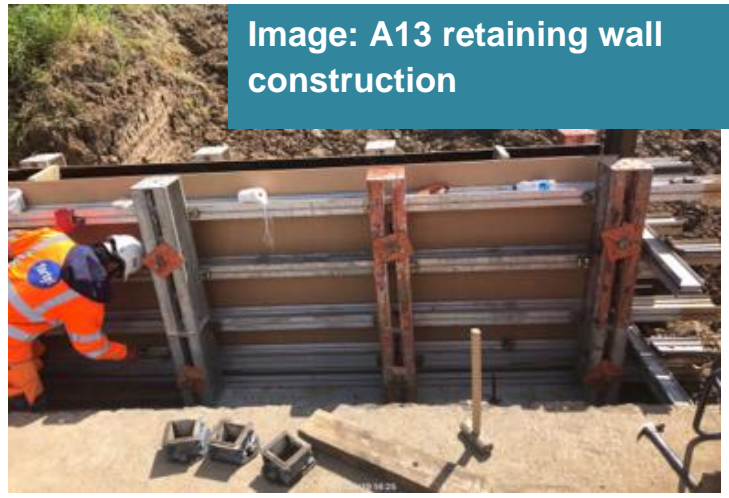
A: Our general site hours will be from 7am – 6pm Monday to Friday and we shall undertake selective activities at weekends. Traffic management and other specific works, unable to be carried out during the day, will also be programmed at night between 8pm - 5am.

## Q: What works are being undertaken?

A: Our works include bridge remedial works, the replacement of bearings on two bridges and various fencing improvement works.

The further scope of remedial works will be determined by the findings of the survey work and agreed with Essex County Council.

Image: A13 retaining wall construction



## Q: How can I register a complaint?

A: We have a dedicated 24/7 helpline team who will be able to investigate any issues. You can call on: 0800 121 4444 or email [help@balfourbeatty.com](mailto:help@balfourbeatty.com).

For out of hours, emergency contact, please call our 24/7 Helpline team free on **0800 121 4444** or email [help@balfourbeatty.com](mailto:help@balfourbeatty.com)

To find out the latest project updates on A13/A130 Sadlers Farm scheme, please visit our project web page here:  
[www.balfourbeatty.com/sadlersfarm](http://www.balfourbeatty.com/sadlersfarm)

For road and traffic information follow:

[@essex\\_travel](https://twitter.com/essex_travel)

[#sadlersfarm](https://twitter.com/sadlersfarm)