

# A13/A130 Sadlers Farm project newsletter

[www.balfourbeatty.com/sadlersfarm](http://www.balfourbeatty.com/sadlersfarm)

December 2021

## We are undertaking a programme of remedial works on the A13/A130 Sadlers Farm scheme on behalf of Essex County Council.

The final phased programme of remedial works at Sadlers Farm is planned to complete by Spring 2022.

The remaining works to Spring 2022 include bridge remedial works, replacement of bearings on two bridges, various fencing/barrier improvements and surfacing works on the main A13/A130.

Some of these bridge remedial works will involve a full closure of the Eastbound A13 diverge between Pitsea Interchange and the Rayleigh Spur Roundabout to undertake intrusive structural repair work to Sadlers Farm Bridge, and to Sadlers Hall Bridge. Further information and details can be found further in this newsletter.

Subject to ECC Network Assurance approvals, these dates may change. All other information about the project can be found on our dedicated web page:

[www.balfourbeatty.com/sadlersfarm](http://www.balfourbeatty.com/sadlersfarm)

## Traffic Management Phases

### Ongoing until Spring 2022

- Various overnight carriageway closures (East and West) between Pitsea Interchange and Rayleigh Spur to carry out bridge repair works

### Ongoing until Spring 2022

- A13/A130 Link Road Eastbound and Westbound Lane 1 closure (mid-week and weekends) for bridge bearing replacement works
- A13 Eastbound Lane 1 closure from Pitsea Interchange to Sadlers Farm Roundabout Junction for fencing/barrier replacement works

**(Please note: all works listed above are subject to change.)**

# Frequently Asked Questions

## Q: When is the project due to complete?

A: Our works are now due to complete in Spring 2022.

## Q: Will there be any road closures?

A: We will implement a multi-phase traffic management plan, comprising of a series of bridge closures, lane closures, overnight and weekend works to carry out the remedial works which will inevitably and unfortunately cause some disruption to road users and local communities. Visit our project news page for more information.

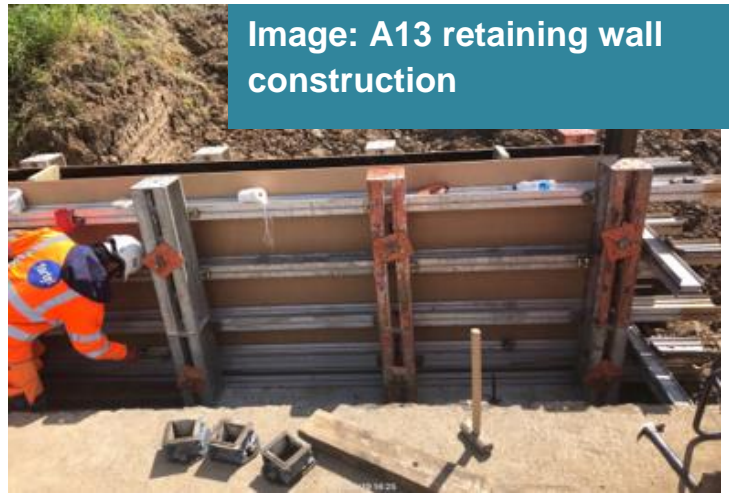
## Q: What are your working hours?

A: Our general site hours will be from 7am – 6pm Monday to Friday and we shall undertake selective activities at weekends. Traffic management and other specific works, unable to be carried out during the day, will also be programmed at night between 8pm - 5am.

## Q: What works are being undertaken?

A: Our works include bridge remedial works, the replacement of bearings on two bridges and various fencing improvement works.

Image: A13 retaining wall construction



## Q: How can I register a complaint?

A: We have a dedicated 24/7 helpline team who will be able to investigate any issues. You can call on: 0800 121 4444 or email [help@balfourbeatty.com](mailto:help@balfourbeatty.com).

For out of hours, emergency contact, please call our 24/7 Helpline team free on **0800 121 4444** or email [help@balfourbeatty.com](mailto:help@balfourbeatty.com)

To find out the latest project updates on A13/A130 Sadlers Farm scheme, please visit our project web page here:  
[www.balfourbeatty.com/sadlersfarm](http://www.balfourbeatty.com/sadlersfarm)

For road and traffic information follow:

[@essex\\_travel](https://twitter.com/essex_travel)

[#sadlersfarm](https://twitter.com/sadlersfarm)