

A13/A130 Sadlers Farm project newsletter

www.balfourbeatty.com/sadlersfarm

23rd July 2019

We are undertaking a programme of remedial works on the A13/A130 Sadlers Farm scheme on behalf of Essex County Council.

The current phased programme of remedial works is planned to complete in October 2019.

Sadlers Farm and Sadlers Hall bridges will then be subject to monitoring during the winter months (2019/2020). On completion of this monitoring it is planned to carry out intrusive structural repair work to both bridges over a short period of time in Summer 2020. Further information and details will be issued ahead of these works.

Following completion of the current phased programme, all traffic management will be removed from site until the planned bridge repair work in Summer 2020.

Subject to ECC Network Assurance approvals, these dates may change. All other information about the project can be found on our dedicated web page:

www.balfourbeatty.com/sadlersfarm

Traffic Management Phases

Ongoing until early September 2019

- Various overnight carriageway closures (East and West) between Pitsea Interchange and Rayleigh Spur to carry out carriageway and verge works, which include traffic sign construction, resurfacing and drainage works

Ongoing until early September 2019

- A13/A130 Link Road Eastbound and Westbound Lane 1 closure (mid-week and weekends) for Contiguous Bored Pile (CBP) Wall works

Ongoing until early September 2019

- A13 Westbound Lane 1 closure from Sadlers Farm Roundabout junction to Pitsea Interchange for roadside drainage works, embankment regrading and carriageway reconstruction

Ongoing until early September 2019

- A13 Eastbound Lane 1 closure from Pitsea Interchange to Sadlers Farm Roundabout junction for roadside drainage works, embankment regrading and carriageway reconstruction

Monday 15th July to Sunday 4th August 2019

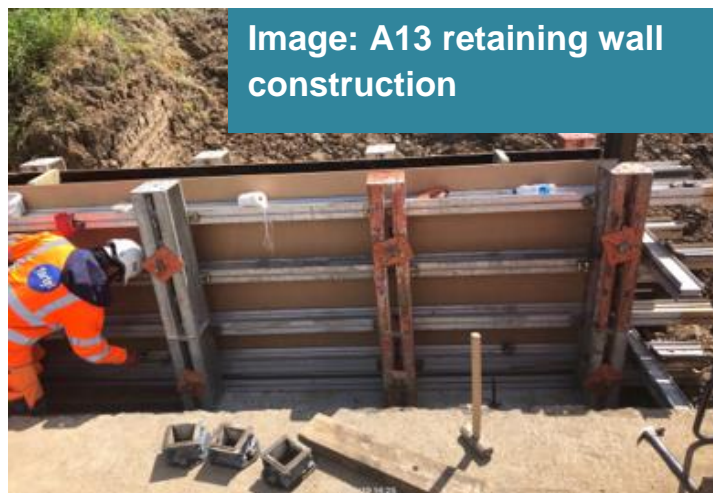
- A130 North Bound Lane 1 closure from Sadler's Farm Roundabout to Rayleigh Spur Roundabout for full depth reconstruction of verge section of A130 Lane 1 north bound carriageway, footpath surfacing repairs at Northbound lorry layby. **Please note:** A130 Northbound lorry layby and Bridle Path will be closed for duration of works. Access to Lyons Farm Shop and fisheries will remain open for customers only. Working Hours: 24/7

Image: A13 police observation platform construction



Monday 12th August to early September 2019

- Various single lane closures of London Road (B1464) between Pound Lane and Sadlers Farm Roundabout for verge works, installation of sheet pile earthwork support behind the road verge, kerb and carriageway reconstruction, footpath reconstruction, sign reconstruction, expansion joint installation, and crack sealing. Property access will be maintained throughout closure. **Please note:** London Road site set up and deliveries will be scheduled for off peak hours / night time, and main construction activities will be during daytime hours however Traffic Management will be in place 24/7



September 2019 to October 2019

- Various single lane closures on the A13/A130 to undertake planting/seeding of embankments and off-network boundary fence/gate installations including drainage ditch reprofiling.

(Please note: all the road closures listed above are subject to change.)

Frequently Asked Questions

Q: When is the project due to complete?

A: Our current programme of works is due to complete in October 2019. We will return to complete works to Sadlers Farm and Sadlers Hall bridges in Summer 2020.

Q: Will there be any road closures?

A: We will implement a multi-phase traffic management plan, comprising of a series of lane closures, overnight and weekend works to carry out the remedial works

which will inevitably and unfortunately cause some disruption to road users and local communities. Visit our project news page for more information.

Q: What are your working hours?

A: Our general site hours will be from 7am – 6pm Monday to Friday and we shall undertake selective activities at weekends. Traffic management and other specific works, unable to be carried out during the day, will also be programmed at night between 8pm - 5am.

Q: What works are being undertaken?

A: Our works include the upgrading of existing drainage systems on the A13/A130 Link Road, remedial works to the block retaining wall and bridges, the replacement of bearings on two bridges, embankment re-profiling and carriageway strengthening on the A13 near Pitsea.

Q: How can I register a complaint?

A: We have a dedicated 24/7 helpline team who will be able to investigate any issues. You can call on: 0800 121 4444 or email help@balfourbeatty.com.

For out of hours, emergency contact, please call our 24/7 Helpline team free on **0800 121 4444** or email help@balfourbeatty.com

For road and traffic information follow:

[@essex_travel](#)

[#sadlersfarm](#)

To find out the latest project updates on A13/A130 Sadlers Farm scheme, please visit our project web page here:
www.balfourbeatty.com/sadlersfarm