

A13/A130 Sadlers Farm project newsletter

www.balfourbeatty.com/sadlersfarm

17th April 2019

We are undertaking a programme of remedial works on the A13/A130 Sadlers Farm scheme on behalf of Essex County Council (ECC).

We have implemented overnight construction activities to keep traffic moving. Traffic Management must remain in place at all times for health and safety reasons. Works are not always visible to the travelling public due to night time working, screens protecting the workforce and shift changes.

Due to unforeseen complications including poor ground conditions and uncharted services, we are currently undertaking additional works to the A13/A130 Sadlers Farm junction at no additional cost to the taxpayer. The works, which are expected to complete at the end of summer 2019, involve further roadside drainage, embankment strengthening and extensive piling repair.

We would like to apologise for any inconvenience caused to drivers and the local community as we continue to work as quickly and safely as possible to complete the remaining works.

Subject to ECC Network Assurance approvals, these dates may change. All other information about the project on our dedicated web page:

www.balfourbeatty.com/sadlersfarm

Traffic Management Phases

Ongoing until early September 2019

- Various mid-week overnight carriageway closures (East and West) between Pitsea Interchange and Rayleigh Spur to carry out carriageway and verge works, which include traffic sign construction, resurfacing and drainage works

Ongoing until early September 2019

- A13/A130 Link Road Eastbound and Westbound Lane 1 closure (mid-week and weekends) for Contiguous Bored Pile (CBP) Wall works

Mid-May 2019 to end of July 2019

- A13 Eastbound Lane 1 closure from Pitsea Interchange to Sadlers Farm Roundabout junction for roadside drainage works and traffic sign construction

Ongoing until end of June 2019

- A13 Westbound Lane 1 closure from Sadlers Farm Roundabout junction to Pitsea Interchange for roadside drainage works and traffic sign construction

23rd April 2019 – 3rd May 2019

- Romsey Road, South Benfleet junction closure at London Road for kerb removal and pedestrian crossing removal and reconstruction. Pedestrian access will be maintained throughout the closure

15th April 2019 – 18th April 2019 10pm - 5am

A130/A13 full westbound closure for the following works to be carried out:

- Bridge pier tie hole repairs
- Crack sealing

Image: Soil Nailing on A13,
February 2019



- V-channel repairs
- Gantry paint repairs
- Gantry sign replacement
- Traffic sign construction
- A13 crossover narrow filter drain

23rd April 2019 – 26th April 2019 10pm – 5am

A130/A13 full eastbound closure for the following works to be carried out:

- Bridge pier tie hole repairs
- Crack sealing
- V-channel repairs
- A13 crossover filter drain
- SFB 21 Soffit concrete work

Friday 10th May to Monday 13th May 2019

- Weekend closure of the Westbound A130 between Rayleigh Spur and the end of the A130 Link Road from **10pm Friday to 5am Monday**
- Diversion will be via A1245 North to A127 Neverden Interchange, Southmayne, Eastmayne to Pitsea Interchange. Traffic from Sadlers Farm Roundabout will have no restrictions Westbound onto A13

Mid-July 2019 to early September 2019

- **Provisional works - subject to final design approval:** Full depth carriageway reconstruction on approach to London Road Bridge. Property access will be maintained throughout closure. Dates and Traffic Management to be confirmed.

(Please note: all the road closures listed above are subject to change.)

Frequently Asked Questions

Q: When is the project due to complete?

A: Our works are now due to complete at the end of Summer 2019.

For out of hours or emergency contact, please call our 24/7 Helpline team free on **0800 121 4444** or email help@balfourbeatty.com

To find out the latest project updates on A13/A130 Sadlers Farm scheme, please visit our project web page here: www.balfourbeatty.com/sadlersfarm

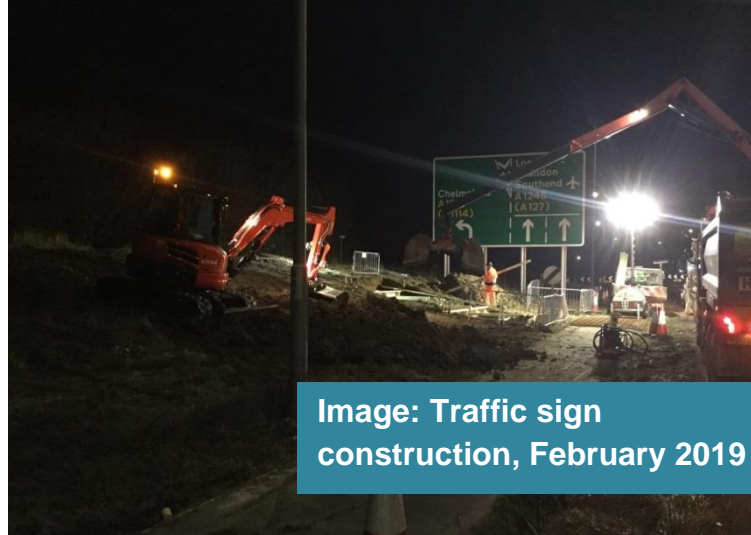


Image: Traffic sign construction, February 2019

Q: Will there be any road closures?

A: We will implement a multi-phase traffic management plan, comprising of a series of lane closures, overnight and weekend works to carry out the works which will inevitably and unfortunately cause some disruption to road users and local communities. Visit our project news page for more information.

Q: What are your working hours?

A: Our general site hours will be from 7am – 6pm Monday to Friday and we shall undertake selective activities at weekends. Works requiring traffic management and other specific works, unable to be carried out during the day, will also be programmed at night between 8pm - 5am.

Q: What works are being undertaken?

A: Our works include the upgrading of existing drainage systems on the A13/A130 Link Road, remedial works to the block retaining wall and bridges, the replacement of bearings on two bridges, embankment re-profiling and carriageway strengthening on the A13 near Pitsea.

Q: How can I get in touch?

A: We have a dedicated 24/7 helpline team who will be able to investigate any issues. You can call on: 0800 121 4444 or email help@balfourbeatty.com.

For road and traffic information follow:

@essex_travel

#sadlersfarm